

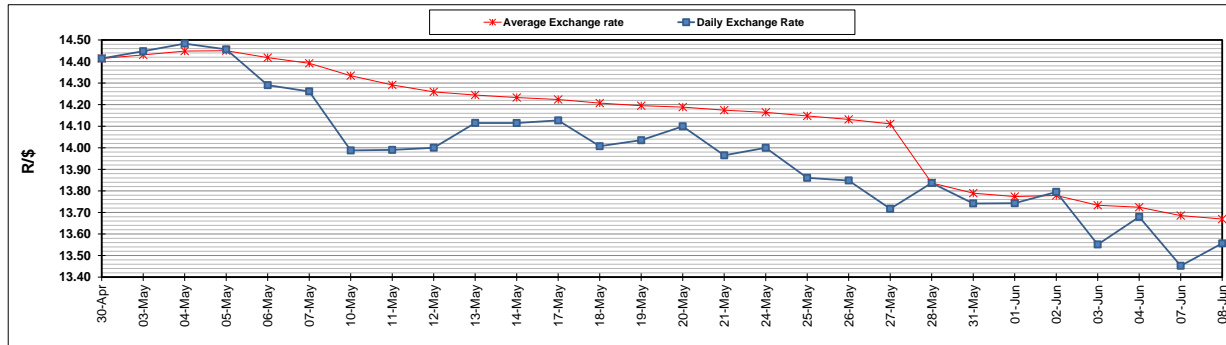
	PETROL 95 ULP	PETROL 93 ULP & LRP	DIESEL 0.05%	DIESEL 0.005%	ILL. PAR.
GAUTENG PUMP PRICE (SA c/l) AS FROM 02/06/2021	1,713.000	1,691.000	-	-	-
WHOLESALE PRICE (SA c/l) AS FROM 02/06/2021	-	-	1,466.620	1,471.020	877.488
SINGLE NATIONAL MAXIMUM RETAIL PRICE	-	-	-	-	1,102.000
BASIC FUEL PRICE - 08/06/2021 (SA c/l)	703.232	695.757	689.192	692.198	665.134
PRESS RELEASE CONTRIBUTION TO BFP 02/06/2021 - 08/06/2021 (SA c/l)	717.170	705.170	679.630	684.030	664.128
UNIT OVER/(UNDER) RECOVERY - 08/06/2021 (SA c/l)	13.938	9.413	(9.562)	(8.168)	(1.006)
AVERAGE BASIC FUEL PRICE 28/05/2021 - 08/06/2021	707.712	699.181	688.270	692.042	666.711
AVERAGE UNIT OVER/(UNDER) RECOVERY 28/05/2021 - 08/06/2021	13.208	9.739	(16.140)	(15.887)	(10.083)

ANALYSIS MOVEMENT OF AVERAGE OVER/(UNDER) RECOVERY

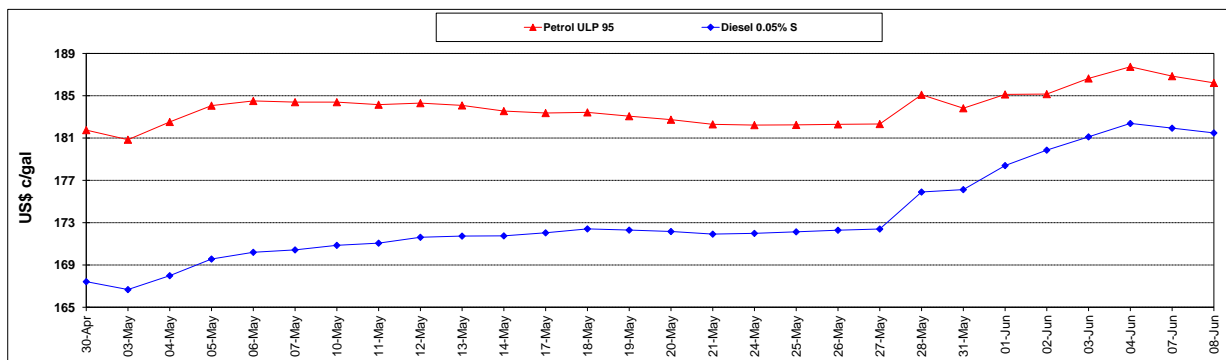
	PETROL 95	PETROL 93	DIESEL 0.05%	DIESEL 0.005%	ILL. PAR.
- MOVEMENT IN INTERNATIONAL PRODUCT PRICES	(9.650)	(12.843)	(38.370)	(38.239)	(31.617)
- MOVEMENT IN EXCHANGE RATE	22.858	22.582	22.230	22.352	21.534
AVERAGE UNIT OVER/(UNDER) RECOVERY 28/05/2021 - 08/06/2021	13.208	9.739	(16.140)	(15.887)	(10.083)

R/\$ EXCHANGE RATE - (R/\$13.5565- 08/06/2021)

EXCHANGE RATE USED IN BASIC FUEL PRICE



INTERNATIONAL PRODUCT PRICES OF BASKET USED IN BASIC FUEL PRICE



BASIC FUEL PRICE IN SA CENTS PER LITRE

